

An aerial view of a city with a river, overlaid with a network diagram. Several glowing white nodes are positioned on various buildings, with white arcs connecting them to represent fiber optic paths. The city is rendered in a stylized, semi-transparent manner, showing buildings, streets, and a river with a small boat. The overall color palette is dominated by blues and oranges.

FTTX

Solutions Overview

Demand for bandwidth on the Internet doubles every second year.

Users enjoy new services with increasing frequency for the sheer convenience of it all. Such services range from IPTV or video on demand to online games or Internet storage of personal data. Intense use of cloud applications and software as a service are daily routines in offices and in our industries because they simplify processes and increase efficiency.

The media, trade and financial sectors send millions of data records around the globe every second to serve the markets. Consequently, fast network connections are meanwhile among the most relevant basic needs of global societies. Decision making on where to open your business or to locate a new company headquarter or corporate offices depends on the availability of data center capacity, data highways and fiber optical network infrastructure.

The currently introduced services in so called smart cities in which traffic, public transport, energy, waste management, wireless communication, connectivity and information exchange in general are continuously controlled and managed, come along with new applications such as e-health, e-learning, e-government. This trend developing towards a Gigabit Society in fast growing urban environments requires even more powerful fiber optical networks for highly efficient and reliable signal transmission.



030.7187

What can network operators do to satisfy this bandwidth demand?



Communication networks have brought about permanent changes to our world. What remains constant, though, is our desire for the best, most reliable way to exchange information with each other. How to guarantee a reliable infrastructure capable of meeting continuously changing future needs?

This is an area where R&M is making a key contribution by offering solutions around most advanced cabling technology for data and communication networks. As an independent Swiss family-owned company, we stand for quality and precision, efficiency and reliability, innovation and sustainability and for long-term collaboration in close partnership with our customers.

R&M is an internationally recognized global manufacturer and supplier of passive distribution and connection technology for all levels of telecom, broadband and data networks. Our Swiss mindset of always providing top quality has implications to your network infrastructure: 100% long-term operational reliability, lowest latency and zero loss of data, simple installation and fast maintenance plus low total cost of ownership as your systems based on R&M technology keep their value year after year. R&M system solutions make a difference due to modular design, cost-effective and fast installation technology, extensive functionality and high level of adaptability.

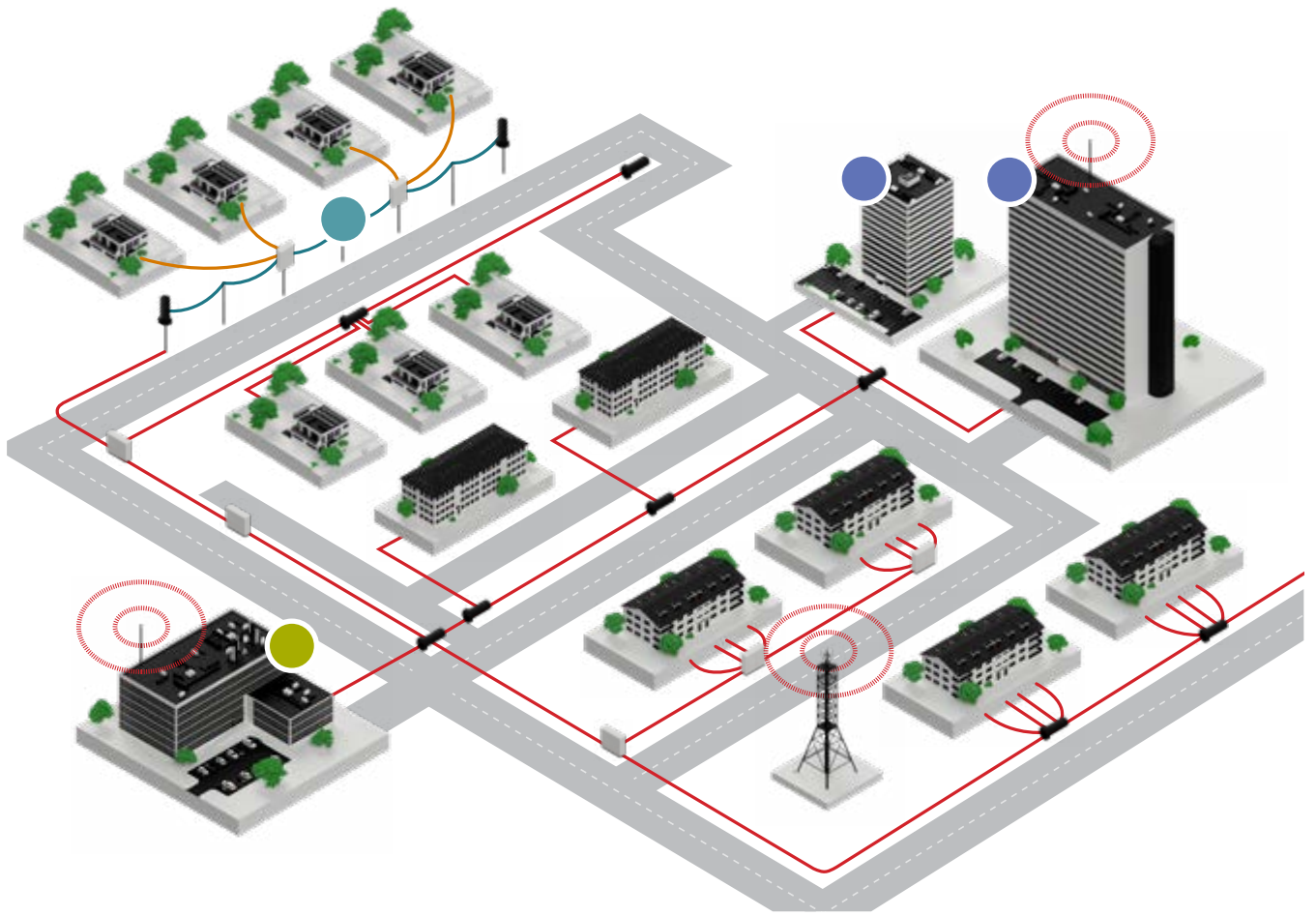
Public and private operators of data and communication networks around the world have already chosen R&M's expertise. Their trust is based on our sophisticated connectivity solutions and the unceasing support we provide to our customers.

The way R&M conducts business is based on the founding values of this family-owned company. With high sense of responsibility and clear focus on customers' needs, R&M takes development of its business, respect for the environment and technological advance into equal consideration.

Our customers expect cables, connectivity systems and customized solutions they can fully rely on for decades. To continuously improve these systems, R&M operates an international innovation center with significant investments in research and development every year. Beyond our emphasis on quality, durability, convenience and precision R&M always invests into farsighted system design which helps customer installations to maintain their value over many years. They can be adapted or extended easily the way their businesses grow. Intelligent features in R&M's portfolio support future applications and can be flexibly expanded or adapted to new market conditions. For network operators this means they remain flexible and can always rely on their investment.

R&M – Building FTTX Networks

For global customers in different industries



Central Office

Customer specific solutions for effective assembly, future-proof expansion and effective operation of optical or copper connectivity based distribution frames. Modular system elements complemented by professional planning consultancy.

Outside Plant

Complete portfolio of robust street cabins, underground closures and distribution boxes offering latest technology in fiber connectivity and management. The different product platforms support all common cable types and fiber optical network topologies.

Customer Premises, Buildings and Cell Sites

Efficient solutions for supplying different buildings and urban infrastructure with fiber optic connectivity. Building entry points inside and outside of the building, realized with Polaris-box family a compact, flexible and modular concept for fiber termination. Complemented by field deployable connectors as a modern alternative to fusion splicing. Fiber optic connection in no time.



041.0496

Indoor FO Cable



030.5603

Fast Reel Outlet Box

Buildings



030.7140

Connectivity



090.7237

Optical Distribution
Frames



090.5389

Raceway



090.7109

Polaris-box Family:
Outdoor & Indoor
Distribution
Termination
Building Entry Point



090.2779

3U-Modules



090.2537

19" Panels



090.7531

Mechanical Gel sealed
SYNO Closures



030.6427

Heat-shrink
Dome Closures



030.6385

Heat-shrink
Dome Closure Flex



090.7057

Customized Street
Cabinets

Outside Plant



090.5622

Cable Assemblies

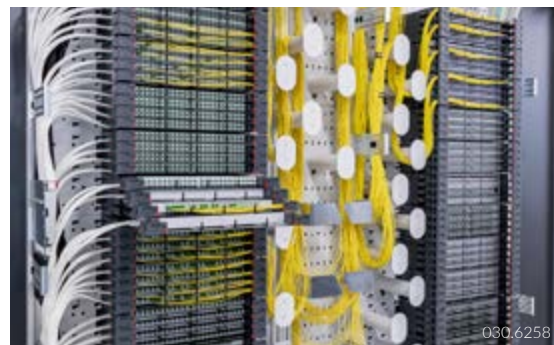
Central Office

Outstanding R&M products

For today's modern FTTX networks all over the world

PRIME ODF

New optical distribution frame offering high-density connectivity and a versatile portfolio of modules, allowing flexible investments tailored to your specific network growth.



SYNO Closure

Future-proof and modular closure portfolio offers you highest flexibility and state-of-the-art sealing technology to master any of your FTTX-rollout scenarios.



Polaris-box Family

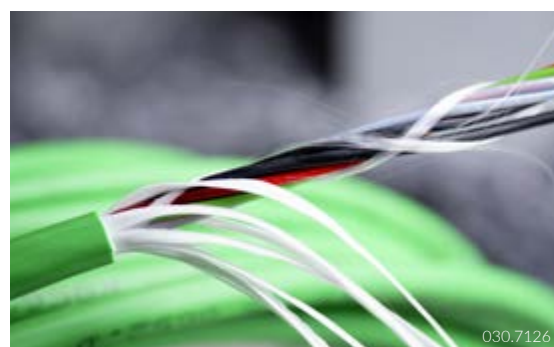
Advanced, multifunctional and highly modular family of termination and distribution boxes, addressing all typical network architecture needs. Providing reliable FO-connectivity – lean, protective and for harsh environments.



Fiber Optical Cables & Cable Assemblies

Optimal cable design for every application. Large portfolio of modern fiber optic installation cables for indoor and outdoor applications. Produced in Europe, complementing our high-quality end-to-end portfolio for your specific FTTX project.

Regardless of whether the cables are pulled into duct systems, blown into micro ducts or deployed as aerial cables or if they need rodent protection as well. R&M has the right cable type for your application.





FO Field

Time is money, especially for installers who have limited installation time during a FTTX rollout. Here the advantage of R&M's FO Field connector becomes handy. Due to the fast assembly process, installation time can be significantly reduced.



LC-QR

With the LC-QR, R&M not only revolutionizes the packing density on the 19" panel but also eliminates the handling limitations that cause disruptions on other high-density LC connector concepts.

Naturally, the adapter is equipped with laser protection. The combination of R&M LC connector ↔ R&M LC adapter exhibits the highest mechanical stability on the market and enables LC connectors to also be used in the most sensitive applications.



E-2000

E-2000™, the most stable optical connector with integrated release function, ferrule protection and colour coding. E-2000 Connectivity guarantees seamless and reliable data transmission in the most demanding applications such as CWDM, high power transmissions even under difficult operating conditions.

Customer Segments and Application Areas

Infrastructure solutions

Operators of fixed or mobile communication networks are making rapid advances in the transition to a Gigabit Society. R&M supports them in their efforts with commercially viable fiber optic solutions for design and construction of future-oriented broadband infrastructures. R&M develops together with network operators a profitable access network infrastructure. Based on our experience we plan with cost-effective equipment your fiber distribution sites, outside plant cabling and connectivity at different customer sites.

R&M's product line is the flexible basis for customized solutions, considering individual FTTX topologies and future applications. R&M provides custom-tailored copper and fiber optic cabling systems for telecom carriers, internet and CATV service providers as well as for utilities, city carriers, municipalities, railway and transportation system operators or urban development companies designing smart city applications.

Telecom Carriers

R&M supplies since many years global telecom operators with high-quality end-to-end fiber optic and copper connectivity solutions for today's fixed, data and mobile communication networks. Innovative, reliable products from central office via ODF, outdoor closures and termination boxes to the end user. Enabling high-speed, high-density and high-availability services.



Utilities and City Carriers

R&M solutions provide modern utilities with efficient communication and control infrastructure for their state-of-the-art public services. This includes connectivity for performant data centers, cabling and connectivity for reliable data collection from different sensors in the grid as well as their secure transmission and evaluation – basis for the operation and management of modern smart grids.





Railways

Railways and transportation systems are increasing their demand for digital signaling systems. At the same time their fiber optical networks become part of globally used data highways and their organization provides IP as a service also to third parties. R&M supports them with protected fiber-optic cabling of highest quality for different levels of modern track-side signaling and communication infrastructure. Long-term reliability and highest availability of all connections are mandatory safety features.



Smart Cities and Urban Development

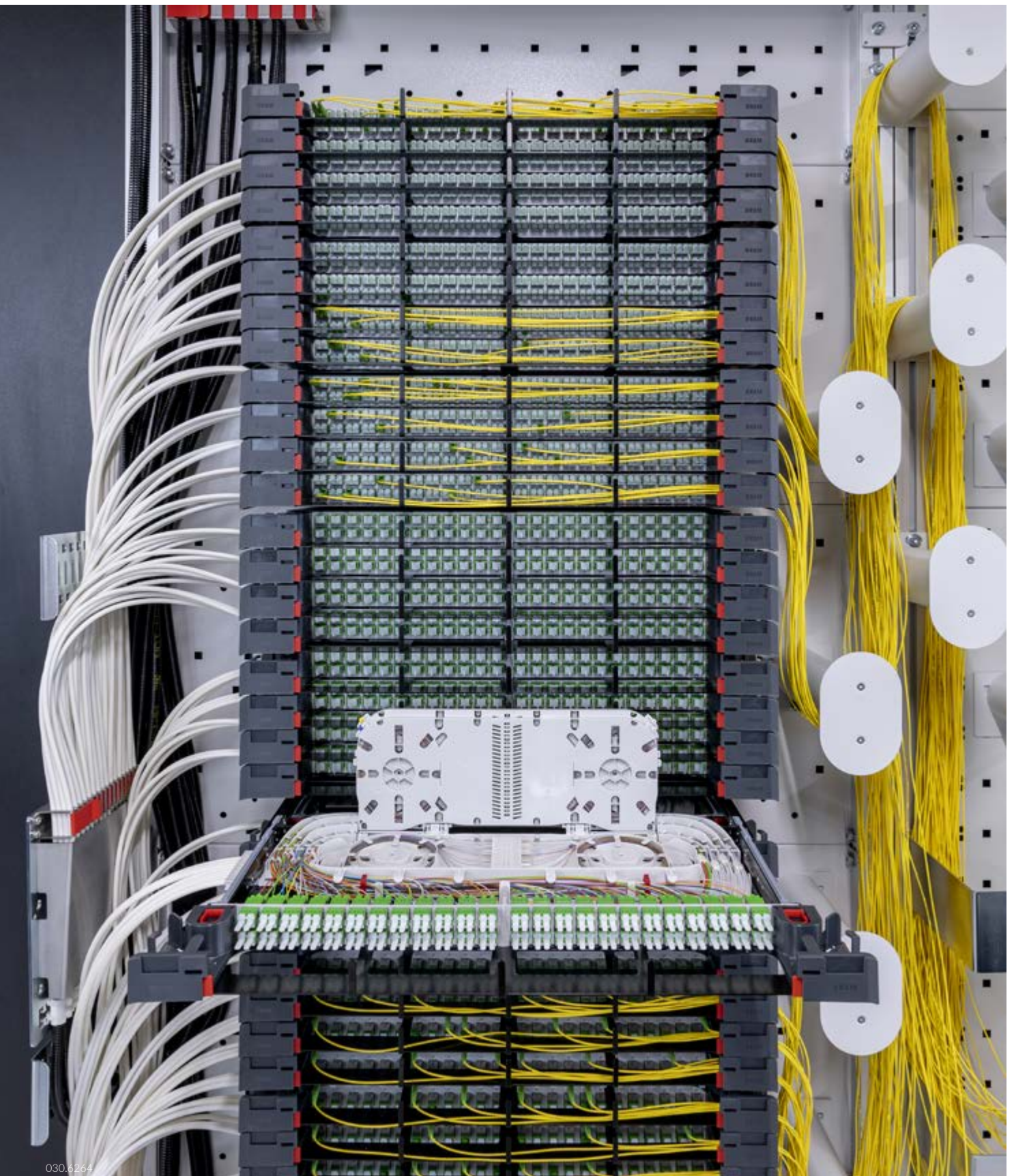
Smart Cities and their intelligent services are built on fiber. Key requirement: High speed and secure data transmission using an all fiber optical backbone providing reliable connectivity, for wired, wireless or combined applications. Converging of mobile and fixed carrier services, will require close cooperation in infrastructure planning, operation and network capacity management. Synchronization between service providers and venue owners offering seamless connectivity indoors and outdoors for multiple applications will become mandatory.

R&M offers intelligent products to realize such complex scenarios connecting for instance modern street furniture as well as all kinds of buildings, industry complexes, and university campuses to the cloud and to the future IoT services.

Where long-term reliability, system availability and secure connectivity are mandatory for safe and timely daily operations.

More about our products

Modular Solutions



030.6264

Product Overview

Find the Product for your need

Optical Distribution Frames

PRIME ODF	12
ODF-SCM	14
19"-ODF-SCM Module	15

Cable Distribution System

Raceway System	16
----------------	----

Splice Closures

SYNO Dome Closure	17
SCM Dome Closure	18
Standard Flex Dome Closure	19

Distribution Houses & Accessories

Polaris-box 4 & 6	20
Polaris-box 16	21
Polaris-box 24 & 36	22
Splitter & xWDM	23

Connectivity

Fiber Optic Cables	24
FO Field	25
Fiber Optic Grades	26
Better connected	27

PRIME ODF

Optical Distribution Frame (ODF)

Benefits

Diversity

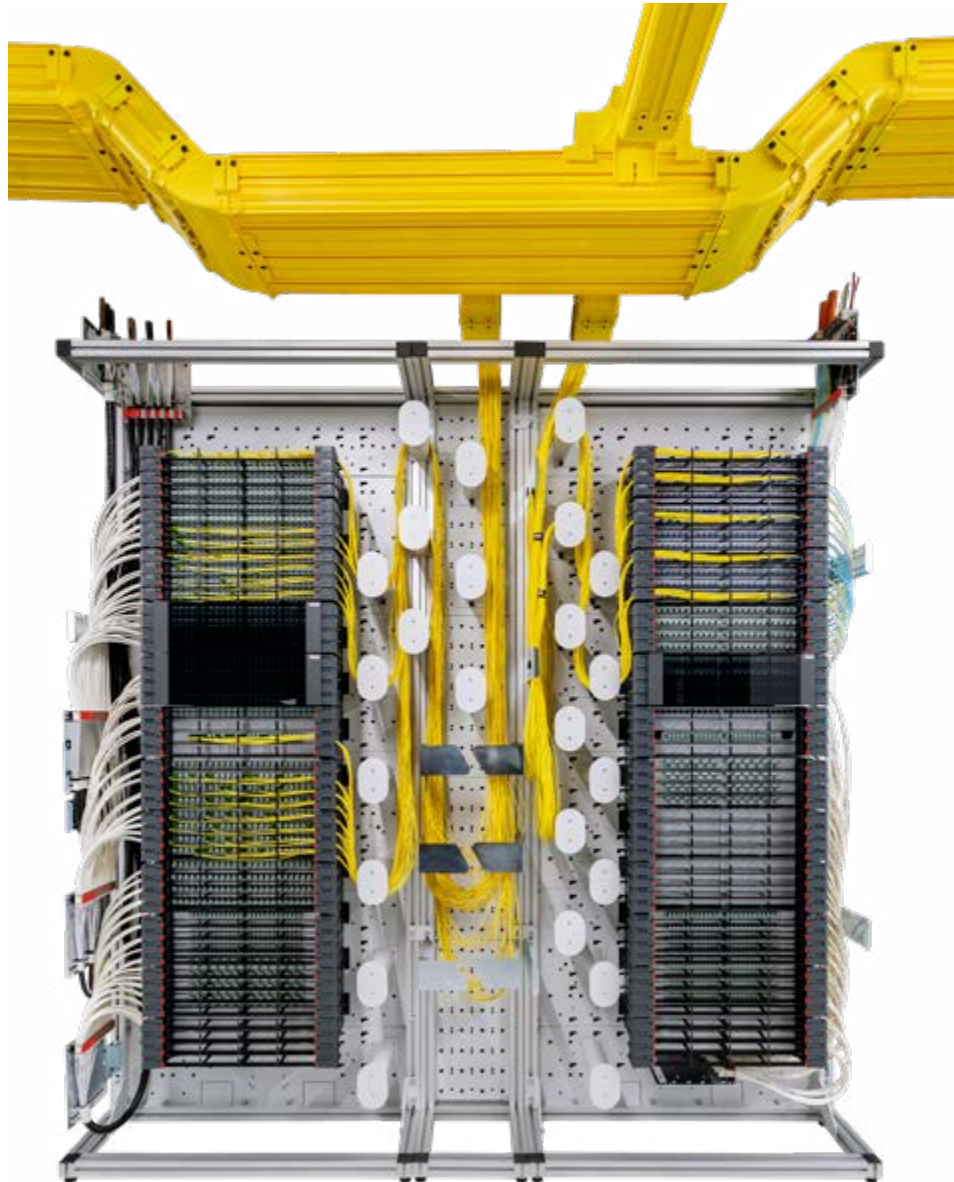
- Migration to existing and new network infrastructures
- Front or rear mounting in 19" and ETSI racks
- Modular application (pure splice, splice patch, breakout applications, fiber storage)

Simple installation

- Front access to connectors
- Tool-free installation
- Simple and secure routing of loose tube cables to the splice trays
- Fine distribution of the fibers to the individual modules
- Terminal block for transport tubes

Features

- Top fiber density
- Optimized space
- Modular use
- Tool-free migration
- Consistent and flexible
- Mirrored system configuration



030.6326



030.6288

The New Generation of Optical Distribution Systems

The compact and versatile PRIME optical distribution modules are suitable for the flexible use of fiber optic terminations. They enable fast and simple installation in cramped environments as well as at sites with high fiber density. The tool-free system approach and the high modularity guarantee uncomplicated migration into new and existing network infrastructures.



PRIME-FTU (Fiber Termination Unit)

Splice/patch solution. Fully integrated splice area and direct front access. Up to 48 SC, E-2000 or LC-D adapters as well as 96 splice connections. Protection of the fibers splice and maintenance work thanks to flexible fiber routing.



PRIME-FSU (Fiber Splice Unit)

Pure splicing solution. Thanks to MCM trays, to a maximum number of fibers of 96 ANT (crimp) or 192 HS (shrink) splice connections. The fiber routing channel under the splice carrier protects the fibers on the way to the splice area.



PRIME-FBU (Fiber Breakout Unit)

Simple connection of pre-terminated cables. Routing and connection of cables from the front and rear to the connectors depending on the rack type (ETSI, 19 inch). Securing of the fanout cables with a strap.



PRIME-FOU (Fiber Overlength Unit)

Storage tray for surplus loose tube cables or unconnected patch cords. The tray can accommodate up to 30 m excess fiber.



PRIME-RFU (Ribbon Fiber Unit)

The new PRIME-RFU is optimized for fast installation and network migration for ribbon fiber applications. The splice tray has an fully integrated splice holder for 8F / 12F of Ribbon Splice Protectors. Capacity up to 96 fibers in the splice patch variant with LC duplex or SC adapters and up to 288 splice connections in the pure splicing variant.

Benefits

TCO reduction

- Excellent subscriber and cable management saves on maintenance costs
- Strainless fiber guidance ensures data security
- Scalable investments thanks to modular configuration

Easy and time-saving installation

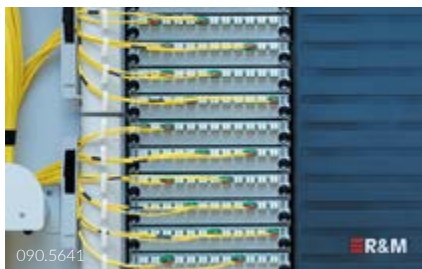
- Short fiber connections between splice and patch module
- No tools needed
- Easy drop arrangement
- Open fiber guidance
- Smart hinge down splice element

Features

- High-density up to 2304 fibers
- Bending radius R40
- Subscriber management with SCM
- ETSI standard compliant
- Retrofittable side panels and door



090.6861_half



090.5641

Into the Future with Fiber Optics

Next generation networks are expanding. The demand for more bandwidth and new services calls for more and more optical fibers. Network operators need new ideas for central office, hub and data center applications in order to manage the expansion of fiber optic infrastructures more efficiently and more flexibly. R&M's answer: the Optical Distribution Frame (ODF) combined with the Single Circuit Management System (SCM). This distribution solution allows to network operators to set up their next generation central office. It helps them master the planning, assembly and operation – smoothly and reliably. Thanks to the modular design and outstanding rapid-assembly technology. There is no limit to the expansion of fiber optic networks.

19"-ODF-SCM Module

Benefits

- Pay as you grow
- Safe network operation
- Separation of subscribers
- Flexible and extendable solution

Features

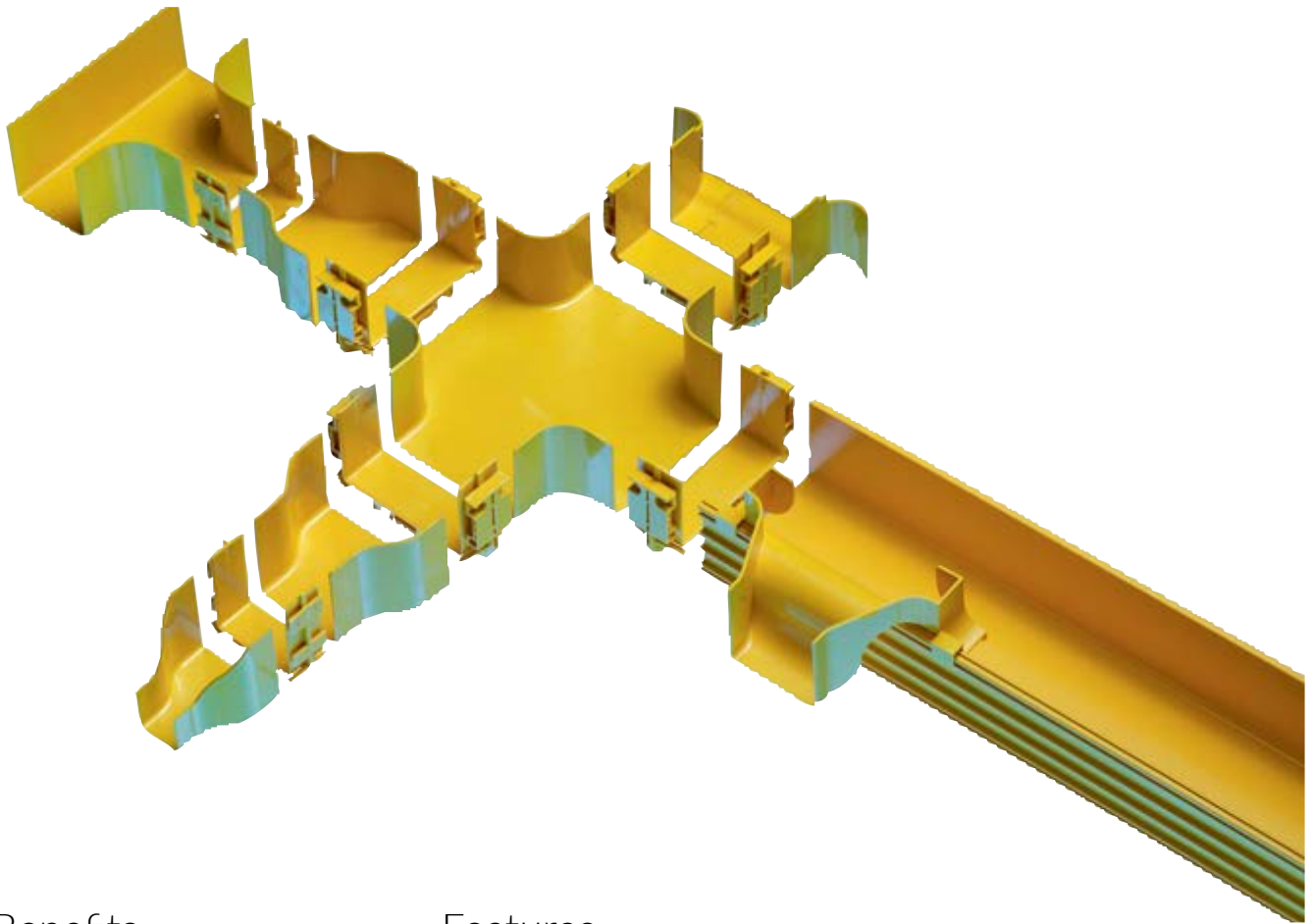
- Up to 6/12 1U-ODF-Patch inserts
- Max. density 576 patch-splice or 1152 splice connection on 10U
- Up to 48/96 SC cassettes
- Tool-free assembly



Flexibility for 19" Solutions

The 5U and 10U 19" ODF-SCM MODULE are especially designed to be implemented in an existing 19" or 21" infrastructure. The ODF-MODULE can be installed from the front- or backside offering of the cabinet. Outstanding is the modular system approach SCM cassettes and ODF Patch-, Splitter and CWDM inserts in the portfolio. The flexible platform supports optical fibers for P2P and P2MP networks. With the two module sizes 5U and 10U, R&M offers distribution capacity for up to 288(5U) / 576(10U) splice and patch connections or up to 576(5U) / 1152(10U) pure splice connections.

Raceway System



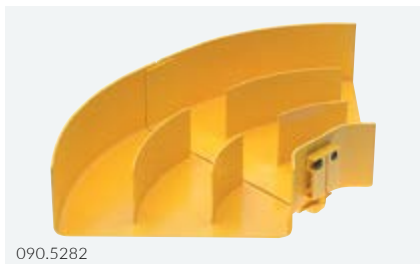
090.5388

Benefits

- Higher network availability
- Fast snap-in installation
- Seamless expansion and retrofitting
- Reductions of up to 60 % in installation and maintenance costs

Features

- All-round protection for optical fibers
- Guaranteed bending radius of 30 mm
- Flexible, modular system



090.5282

Rely on smart cable raceways

Operators of broadband networks and data centers prefer taking the fast, efficient route. That is also true of raceways in central installations and distribution sites. Installation and re-equipping of fiber optic raceway systems have to proceed as smoothly as possible to save time for productive tasks. You can now switch to the passing lane when it comes to cable raceways. With the Fiber Optic Raceway System from R&M, you take the lead in managing fiber optic links while adding benefits for your own operation. The R&M Raceway System has a smart design: safe, fast, efficient, modular, customized and easy to handle.

SYNO Dome Closure

Benefits

- Cold-sealing technology
- High degree of flexibility
- Fast and intuitive installation
- For cable and micro duct networks

Features

- Cable entries from 1 mm up to 28 mm
- Micro duct entries for 5, 7, 10, 12 and 14 mm
- Re-usable cable entry ports based on gel technology
- Strain relief for each cable
- Can be individually equipped with SC, SE and splitter trays



090.7756



030.6424

Flexible closure with cold-sealing technology

The development of the new mechanically cold-sealed R&Mfoxs closure family was shaped by new and innovative installation and maintenance processes that had to be increasingly efficient and reliable in the field. Avoiding errors and increasing speed no longer have to be mutually exclusive in building and expanding FTTX projects.

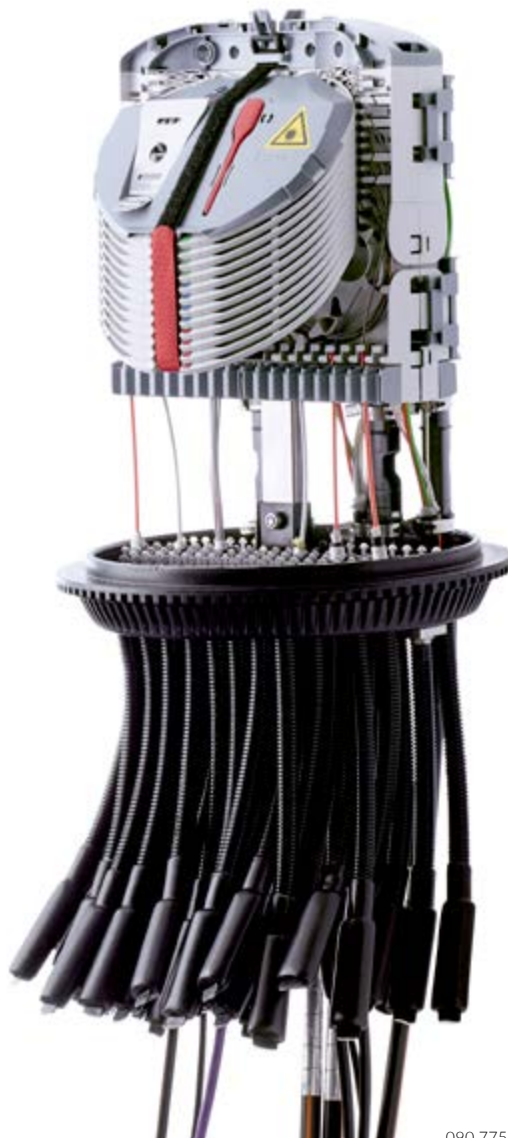
SCM Dome Closure

Benefits

- Easy and reliable installation
- Easy expansion
- Scalable investments

Features

- Minimum bending radius of 40 mm
- Individual assembly
- One SE tray for 24 fibers
- Capacity of from 144 up to 1152 fibers
- Excellent tray identification system
- Modular extension



090.7756



030.6387

The all-rounder

The last mile often calls for individualized solutions. FTTH is sure to succeed in any case with the R&M splice closure and the SCM system. The module can be equipped with SC and SE trays as desired. When the 24-fiber loose tube is used, one single SE tray can accommodate all its fibers. After all, they fit seamlessly together. The capacity is unique: The SCM system packs up to 1152 splices in the splice closure, including an adjustable spare fiber deposit. There is always room for crossover-free fiber distribution and convenient 40 mm bending radius. Network operators can benefit from all the possibilities for future-proof, reliably operating FTTH infrastructures.

Standard Flex Dome Closure

Benefits

- Compact dimensions
- Fast and reliable installation
- Well-arranged fiber installation

Features

- Easy separation for safe and reliable sealing
- Shrink sleeve for drop cables are already prepared
- Storage basket for uncut or expressed loose tubes
- For up to 144 fi bers



030.6356



030.6389

Flex drop cable ports for easy and reliable installation

The Standard Flex Dome Closure is specially designed for the last mile. With the unique Flex drop cable ports is a convenient access to each single port for installation guaranteed. Even with a high port density.

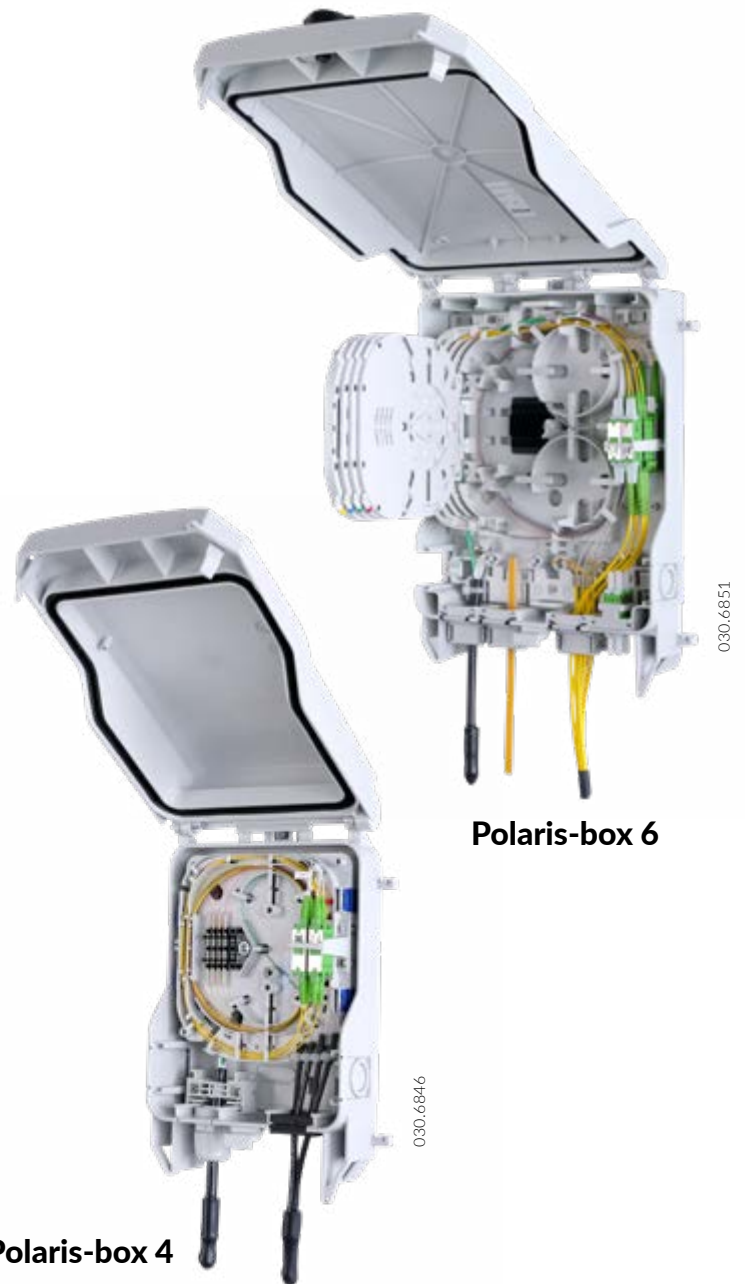
Polaris-box 4 & 6

Benefits

- Fast and save fiber optic distribution
- Easy to install
- Patching possibilities inside and outside
- Compact design
- For indoor and outdoor applications

Features

- Up to 60 splice and 12 patch connections
- Protection class up to IP65
- Integration up to 4 additional FMTS splice trays R30
- Allows integration of passive optical components
- Fiber separation for up to 5 subscribers



Small, modern and flexible

The Polaris-boxes 4 and 6 are modern, flexible and highly-modular fiber optic distribution and termination enclosures, offering splicing and patching features as well as integration of passive optical components. The box is especially designed for reliable and installer friendly indoor or outdoor applications (IP65) where compactness and a high level of integration is required. The new unique sealing elements allows fast and flexible inserting of loose tube cables, micro cables, drop cables or micro ducts from all 4 sides. The boxes offer under severest conditions compliance to protection class IP65. All optical fibers are protected through professional fiber management guides and cassettes and a guaranteed minimum fiber bending radius of 30 mm.

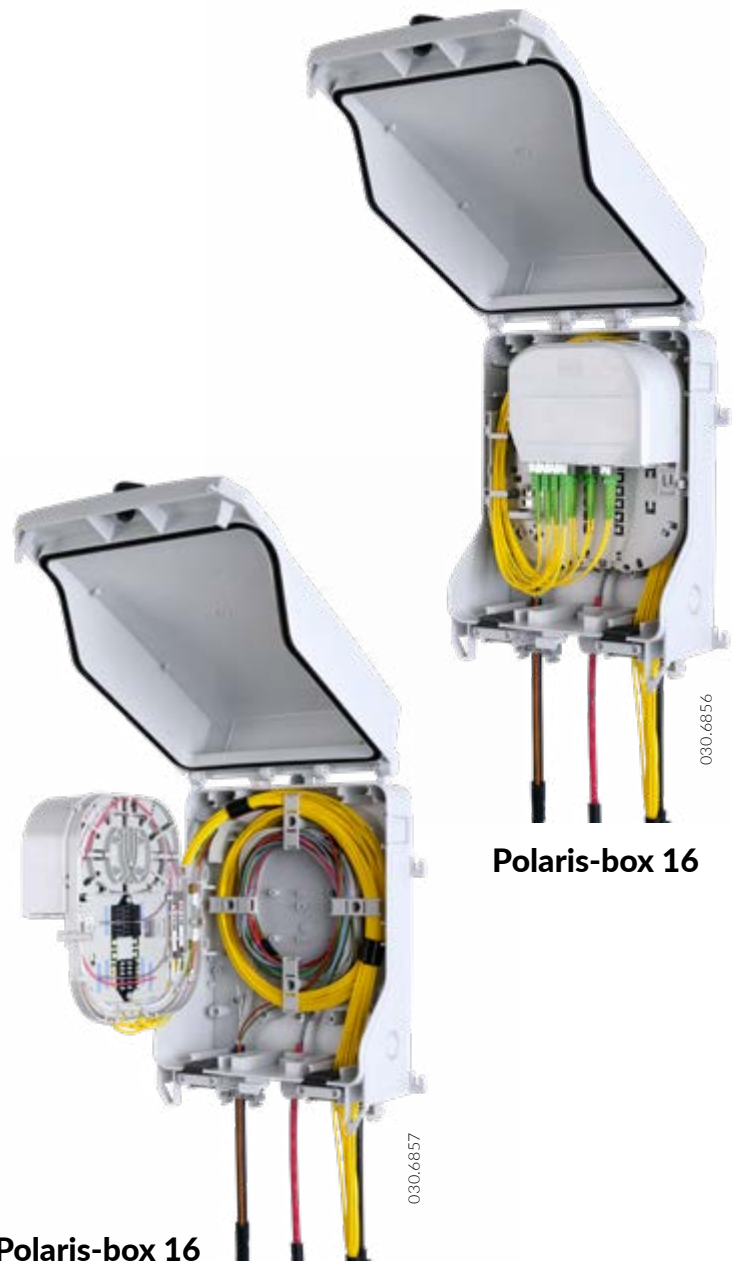
Polaris-box 16

Benefits

- Compact and cost optimized
- Easy network migration and expandability
- One solution for several applications
- Smart splitter concept

Features

- Integrated overlength storage
- Pivotal fiber inlay with a separated Splice and Patch side
- Min. bending radius R30 mm
- Up to 24 splice and 16/24 patch connections
- Retrofitting up to 2 LGX Splitter modules



Wide range of application

The new Polaris-box 16 variant complements the family and its success story. This version can be used multi-functionally and individually equipped with patch, splice and splitter configurations. With the innovative sealing concept, it meets the requirements of protection class IP65 and can be used for indoor and outdoor applications. FTTH providers use the Polaris-16 box to build any typical topology in the access area. The areas of application range from a single-family home to a building complex or even a residential estate.

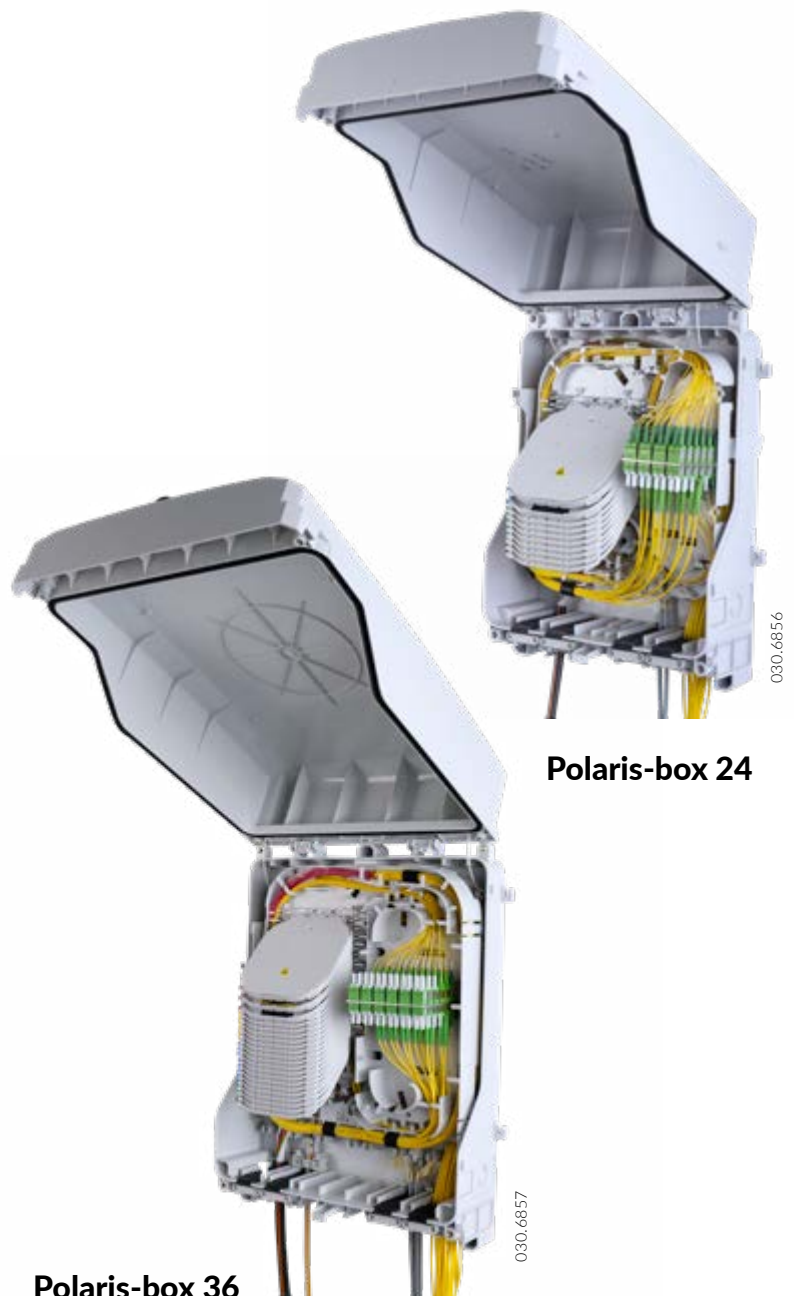
Polaris-box 24 & 36

Benefits

- Highest flexibility and transmission reliability
- Easy network migration and expandability
- One solution for several applications
- Smart subscriber separation

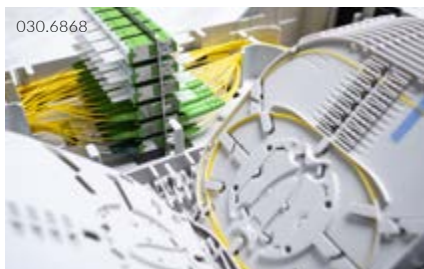
Features

- Integrated overlength storage
- Pivotal fiber inlay with a separated Splice and Patch area
- Min. bending radius R30 mm
- Up to 144/288 splice and 48/72 patch connections
- Retrofitting of up to 12/24 FMTS splice tray



Polaris-box 24

Polaris-box 36



Where number of connections and flexibility matter

The new Polaris-boxes 24 and 36 are extending the application range for larger FTTH distribution and termination needs. These variants offer more space, modularity and variety including i.e. smart solutions for subscriber separation. Thus, complementing the modularity of the Polaris-box concept and its success story. FTTH providers can satisfy with these solutions every typical need in the access network area. The new housings are deeper so that more loose tubes and subscriber cables can be easily stored, plenty of space for cable overlengths is offered in the base. New, multi-part sealing blocks make it easier to insert many different cables in a smart way. Splice and plug connectors are positioned on pivotable inlays.

Benefits

- Easy retrofitting, easy installation
- 100 % tested
- Highly customized product range
- Available as component, connectorized or fitted into various platforms

Features

- Application areas are PON – FTTx systems, CATV connections, wide area networks (WANs)
- Low insertion loss, PDL, Back Reflection
- High uniformity
- Compact design
- Splitting ratio of 1x2 up to 2x64
- PLC and FBT for splitter
- Bidirectional CWDM modules from 1x2-channel up to 1x16-channel



High performance passive components

R&M's passive components (PON-Splitters or CWDM) guarantee highest performance and functionality. Precise manufacturing combined with 100 % quality control ensure high reliability. All components are available as splicable or pre-connectorized solution, or already fitted into pre-configured fiber management modules. The size of the component depends on the number of channels and the split ratio. R&M guarantees always the most compact and space optimized design.



030.6503

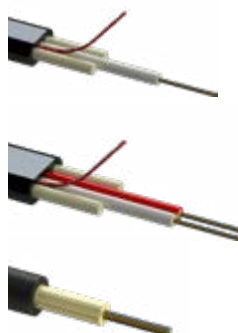
Optimal Cable Design for Every Application

R&M offers a broad cable portfolio tailored for the «Fiber to the Home» sector. Regardless of whether the cables are pulled into duct systems, blown into micro ducts or deployed as aerial cables, R&M has the right cable type for the job.

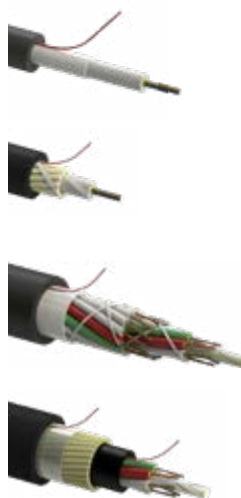
Microduct cables



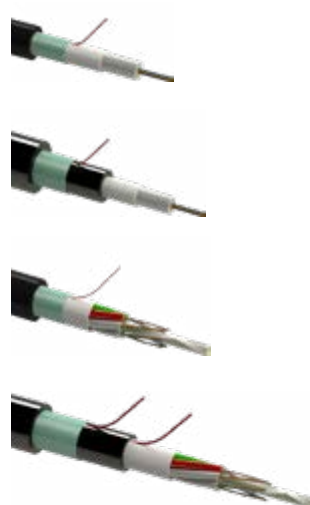
Aerial drop cables



Duct cables rodent protected



Duct cables rodent safe

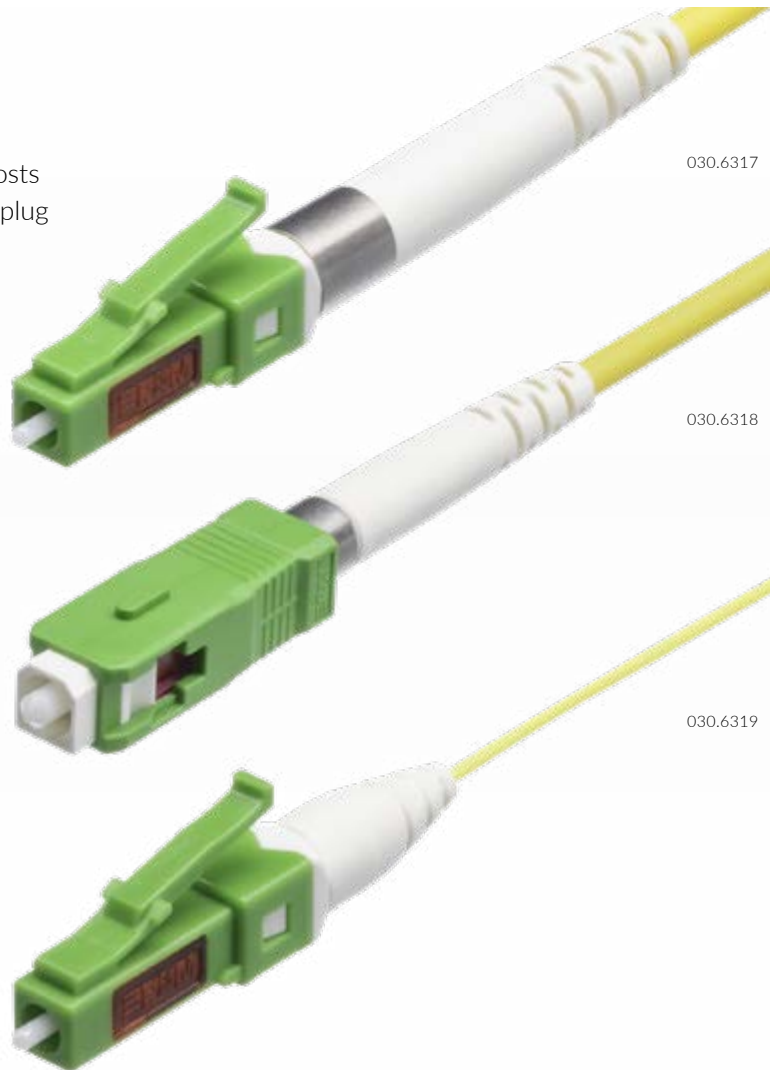


Benefits

- Tool less assembling
- Fast and secure assembling saves installation costs
- Easy logistic: all cable and tube types with one plug
- Reduces maintenance costs

Features

- 60dB RL plugged, >55dB unplugged
- Grade Cf, IL typ. 0.25dB
- 35dB RL and Grade BM_f for MM
- Available as LC and SC
- Perfect solution for FITH, FTTH
- Flexible, modular system



A genuine alternative to splicing – the FO Field from R&M

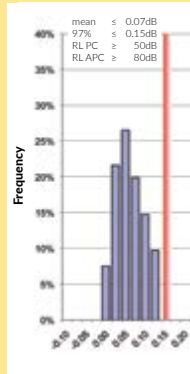
Professional and quality-conscious users of FO cabling demand precise APC contacts (APC = Angled Physical Contact) for the entire transmission path. In this solution, the fiber polish is 8 °. The result: LC and SC connectors for single-mode fibers and APC polish with top-class performance in the Grade Cf/1 range. At this performance level, insertion loss is typically 0.25dB and return loss over 60dB – always referring to the connector and fiber junction together. A multimode version is available as well with excellent performance: RL >35dB and IL 0.25dB.

The connectors can be used to assemble tight and compact tubes of 0.6 to 0.9 mm diameter. Crimp-free strain relief cables of up to 3.0 mm. Time is money, especially for installers who have limited installation time during a FTTH roll-out. Here the advantage of R&M's FO Field connector becomes handy. Due to its fast and easy assembly process, the installation time can be massively reduced.

Fiber Optic Grades

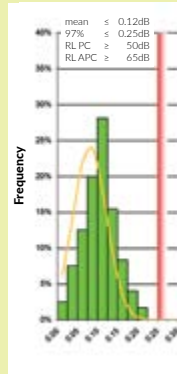
Singlemode-Grade A*

PC and APC - polished



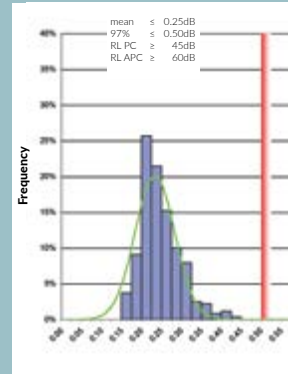
Singlemode-Grade B

PC and APC - polished



Singlemode-Grade C

PC and APC - polished



Technical Data

Definition IL/RL at R&M	Grade A*/1	Grade A*/2	Grade B/1	Grade B/2	Grade C/1	Grade C/2
Insertion loss (IL) 97%	≤ 0.15 dB	≤ 0.15 dB	≤ 0.25 dB	≤ 0.25 dB	≤ 0.50 dB	≤ 0.50 dB
Insertion loss (IL) typical value	≤ 0.07 dB	≤ 0.07 dB	≤ 0.12 dB	≤ 0.12 dB	≤ 0.25 dB	≤ 0.25 dB
Return loss (RL)	≥ 80 dB	≥ 50 dB	≥ 65 dB	≥ 45 dB	≥ 60 dB	≥ 45 dB
Typical	≥ 90 dB	≥ 55 dB	≥ 85 dB	≥ 55 dB	≥ 80 dB	≥ 55 dB
Laser power, inserted IEC61300-2-14, 500h, 23° C	≤ 2 W	≤ 300 mW	≤ 1 W	≤ 300 mW	≤ 500 mW	≤ 300 mW
Definition IL/RL at R&M	Grade Am*/2		Grade Bm*/3		* not defined by standards yet	
Insertion loss (IL) 100%	≤ 0.25 dB		≤ 0.50 dB			
Insertion loss (IL) typical value	≤ 0.10 dB		≤ 0.15 dB			
Return loss (RL)	≥ 45 dB		≥ 35 dB			



Independent grading for fiber optic connectors

Quality grades for fiber optic connectors mean more reliability for customers. Upgrading and installing optical high-performance networks is in full swing on an international scale. This means the importance of connectors as key components of the passive cabling infrastructure is also increasing. No matter what area, from WAN, metropolitan area and campus network applications up to backbone cabling and subscriber connections, the use of top-quality connectors ensures highest transmission rates, consistent network availability and saves energy to boot (Green Network). It is therefore indispensable that planners and installers have a sound knowledge of the quality grades for fiber optic connectors.

Better connected

Networks for a lifetime



Planning safety.

We share our know-how of more than 50 years with our customers to pave the way for a perfectly performing network.



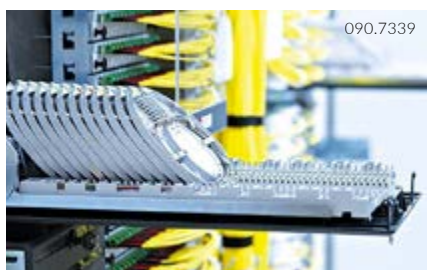
Installation safety.

Time pressure and limited space are the reasons why installation times can be long and wrong. R&M systems have guaranteed channel performance and have been developed and tested for practice.



Operation safety.

R&M stands for mechanically and thermally stable design, a prerequisite for years of trouble-free operation of networks.



Expandability safety.

R&M develops backward compatible products that fit into any existing network.



Maintenance safety.

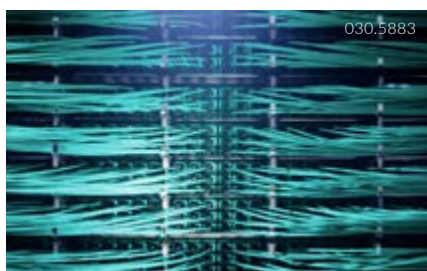
MAC-actions (Move-Add-Change) are a source of mistakes and unplanned downtime. R&M solutions and services combined with high quality products help to prevent from mistakes and to save money.



Compliance safety.

R&M products and processes meet all relevant international regulations and standards:

ISO 9001
ISO 14001
RoHS
REACH



Networks for a lifetime

The market constantly faces new challenges and demands. New environments and needs increased requirements for networks and components in terms of operation and future security. R&M meets these needs by constant innovation and evolution of products and systems. Due to our proximity to our customers worldwide, we create practical and tailored solutions. Our focus is on maximum planning and cost control across the entire value chain and product life cycle. And that's how you save money over time.

Designing access networks individually

Customized System Solutions



As a total supplier with an integrated system approach for fiber optic and copper cabling, R&M works side-by-side with operators of public and private networks. Our joint task is to supply customers with modern broadband infrastructures.

For this R&M provides systems using building-blocks making design and installation intuitive and easy. The distribution and connection technology is modularly designed, and all elements match. This makes R&M solutions extremely flexible in meeting the specific requirements and conditions of the different market segments they serve our and the huge variety of customer sites - indoors as well as outdoors

R&M offers advanced, leading-edge solutions for demanding FTTX topologies of every type. The system merges all the factors that network operators need for efficient rollout, reliable operation and competitive service.

Based on a flexible and modular product platform different cabling and connectivity solutions can be put together to suit very specific requirements and a wide range of applications. These solutions can handle all cabling and connectivity tasks around typical FTTX applications from the central office, through the outside plant area all the way to any form of customer premises. The distribution, splicing, splitting and connecting requirements or challenges can be easily matched covering all typical network topologies and fiber optical cable types or routings.



Complete Solution From One Source

Secure, Modular, Customized

Service & Training

R&M customers always know what they can expect from us. They consistently receive expert answers, fast decisions and professional support. Qualified experts, available in all sales regions, are responsive and take initiative in actively supporting their customers. Seamless service also includes the provision of prefabricated units and always factory tested components or assemblies.

Consultancy during the planning phase of the network along with product evaluations are professional services you can expect from R&M. Whenever required, we develop custom-tailored solutions based on our portfolio with our application engineering team.

The R&M Academy offers programs for partners and customers who would like to expand their knowledge and expertise in the installation, testing and maintenance of networks. With training courses and certification programs, R&M promotes the long-term quality of installations. Certified partners receive even long-term guarantees and exclusive support services. R&M supports them over the entire life cycle of their installations.

Professional Partnership

With your decision to work with R&M, you choose a strategic partner who offers far more than innovative cabling solutions. By using R&M products and custom-made solutions, your networks are flexible and equipped for the future with our consistently modular approach and scalability of our portfolio – you have plenty of options. Your network can be adapted at any time to new market developments required changing site conditions or adaptations.

R&M is always considering innovative and reliable solutions and offering professional training and on-site instruction. So nearly error-free handling and high operational reliability can be achieved together with your teams.

R&M's end-to-end compatible systems simplify planning, assembly and operation and contribute so to efficient and cost-effective layer1 infrastructure installations. Required investments are reduced and necessary to meet specific requirements having at the same time intelligent scalability features included to be prepared for future network rollout steps. So total cost of ownership is fully justifiable.



The Number 1 for Layer 1

The demand for online services continues to grow steadily and along with it the challenges for fiber optic networks. With R&M as your partner and solution provider for FTTX networks you mark out a sure path into a competitive future.

R&M offers you modular cabling and connectivity systems designed around the very latest technology. It is just as simple as it is secure to put into service and saves you installation time.

R&M's FTTX solution portfolio is suited for both point-to-point and point-to-multipoint schemes and is also ready for WDM-PON, thus providing the highest possible level of availability.

R&M is your partner for rugged, integrated and modular Layer 1 FTTX connectivity systems. We support and consult you in the configuration or migration of your network with innovative and customizable solutions around management, distribution and termination of optical fiber at central office, outside plant in the field and at customer premises.

R&M generates added value

Connectivity that matters

Cabling solutions with added value. That is what R&M (Reichle & De-Massari AG) stands for. This is the added value customers experience during the effortless installation of R&M cables and over several generations of use without interruption.

Since 1964, R&M has been developing and producing exclusively high-quality and future-proof connecting and distributive technology. As an independent Swiss family company, R&M is one of the world's leading suppliers of innovative cabling systems for data and communication networks.

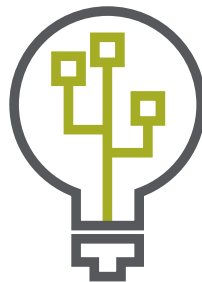
Thanks to the innovative strength of the company, R&M now covers the entire range of copper-based and fiber optic connectivity. R&M systems can be used in telecom networks, Fiber to the Home projects, data centers and local data networks of utilities, municipalities, hospitals, or enterprise and campus network applications. Software for network management rounds out the portfolio.

The cabling solutions are tailored precisely to user requirements. Clients who opt for R&M invest in sustainably reliable, scalable and migration-capable infrastructures. The result: Networks with guaranteed, measurably superior performance.



Quality

Every bit reaches its goal.



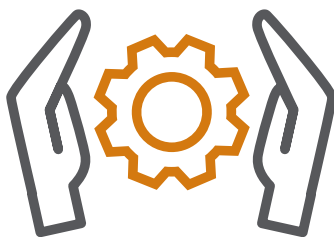
Innovation

Excellent and effortless wiring.



Consultancy

International project expertise and reliable advice.



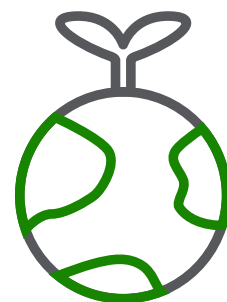
Protection of investment

Install just once and enjoy permanent use.



Customer focus

Responsible experts on site.



Sustainability

People, nature and the market in harmony.

R&M forms partnerships

Support that matters

Project success is determined by the network of the project partners. Best data and communication networks are the result of good collaboration.

R&M offers professional technical consultancy for system integrators, planning engineers and installers at the early stage of a infrastructure project. The subsequent support ranges from the design through evaluation, configuration, customizing, logistics and installation training through to the actual commissioning of the network.

The global R&M network comprises proprietary sales offices, production plants and warehouses as well as certified distributors and partners. R&M products are available locally to partners and customers in more than 100 countries.



Lead: R&M makes partners insiders

In practice-oriented workshops planners, distributors, project managers and installers gain insider knowledge about future technologies, trends and standards and have the opportunity to exchange experiences with R&M experts.



Success: Meaningful case study publications

R&M continuously documents reference projects in meaningful reports. The case studies developed together with partners and customers provide valuable insights into network technology.

Headquarters

Switzerland
Reichle & De-Massari AG
Binzstrasse 32
CH-8620 Wetzikon

www.rdm.com

Please choose your country
on our global website

R&M Blog Portal

www.blog.rdm.com



/reichle-&-de-massari-ag



/reichledemassari



@reichledemassari



/ReichleDeMassariAG



@reichle_massari



We are represented by almost 3000 qualified partners worldwide.
Find your local partner at: www.rdm.com

